

# Updating the Firmware on your Garmin Chartplotter (Jan 2010)

1. Please find and download the software update for your device at the following link: <http://www8.garmin.com/support/blosp.jsp>

Product Name	Date
<a href="#">BMW Motorrad Navigator III</a>	November 29, 2007
<a href="#">BMW Motorrad Navigator III plus</a>	November 21, 2007
<a href="#">BMW Motorrad Navigator IV</a>	December 4, 2009
<a href="#">cf Que 1620</a>	May 10, 2006
<a href="#">Colorado 300</a>	October 7, 2009
<a href="#">Colorado 400c</a>	November 25, 2009
<a href="#">Colorado 400i</a>	November 25, 2009
<a href="#">Colorado 400t</a>	November 25, 2009
<a href="#">Communicator Plugin</a>	November 10, 2009
<a href="#">Dakota 10</a>	December 22, 2009
<a href="#">DNX 5 Series</a>	December 21, 2009
<a href="#">AVN,KNWD,Am,GPS, System</a>	December 18, 2009
<a href="#">AVN,KNWD,Atl,GPS, System</a>	December 18, 2009
<a href="#">DNX7340</a>	December 1, 2009
<a href="#">DNX 7/8 Series</a>	December 21, 2009
<a href="#">AVN4,KNWD,NA,GPS, System</a>	December 1, 2009
<a href="#">Kenwood DNX9140</a>	December 1, 2009
<a href="#">Edge 205</a>	May 4, 2007
<a href="#">Edge 305</a>	May 4, 2007
<a href="#">eMap</a>	August 7, 2003
<a href="#">eTrex</a>	June 14, 2002

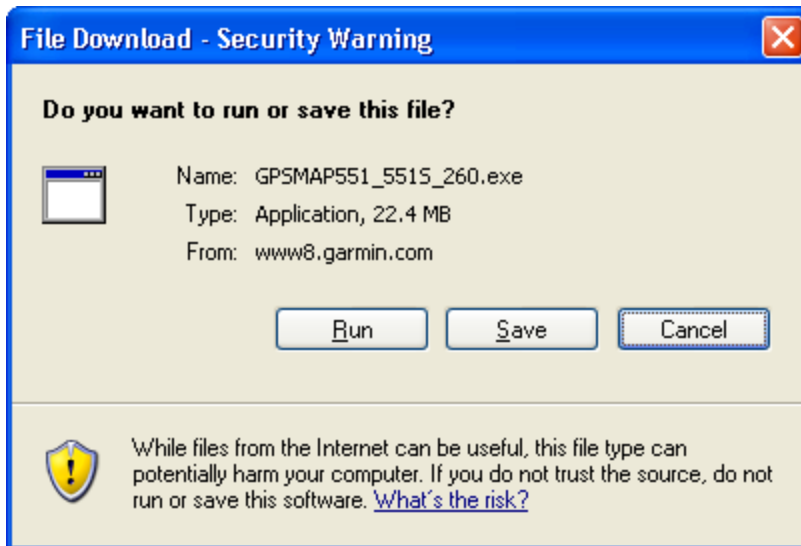
2. Download the software from the Updates and Download link, putting it directly on the card.

The screenshot shows a Microsoft Internet Explorer browser window with the following details:

- Address Bar:** <http://www8.garmin.com/support/collection.jsp?product=010-00763-00>
- Page Header:** GARMIN® Company | Products | Solutions | Extras | Maps | Support | Shop | myGarmin
- Breadcrumbs:** Home > Updates & Downloads
- Search:** search [GO]
- Main Content:**
  - Updates & Downloads**
  - GPSMAP551, Aus/NZ**
  - Unit Software**
    - o GPSMAP 551/551S, Ver. 2.60, as of January 7, 2010, [Download](#)
- Support Menu (Right Side):**
  - support
  - [FAQs](#)
  - [Updates & Downloads](#)
  - [Manuals](#)
  - [Product Documentation Survey](#)
  - [Product Registration](#)
  - [Device Interface SDK](#)
  - [Warranty](#)
  - [Out-of-Warranty](#)

Copyright © 1996 – 2010 Garmin Ltd. or its subsidiaries | [Privacy Statement](#) | [Terms of Use](#) | [Site Map](#) | [Map](#)

Click Save and find the drive for your SD card reader. Select the SD card drive and then save the firmware to the SD card



3. Remove the card from the reader once it has finished downloading and place the card into the SD slot on your chartplotter also known as the "primary device".
4. Power on the device. Make sure all of the network devices are powered on.
5. An "Update" tab will display on the screen. Scroll to this tab and click **Select**.
6. When the update is complete, power off the device and remove the card.